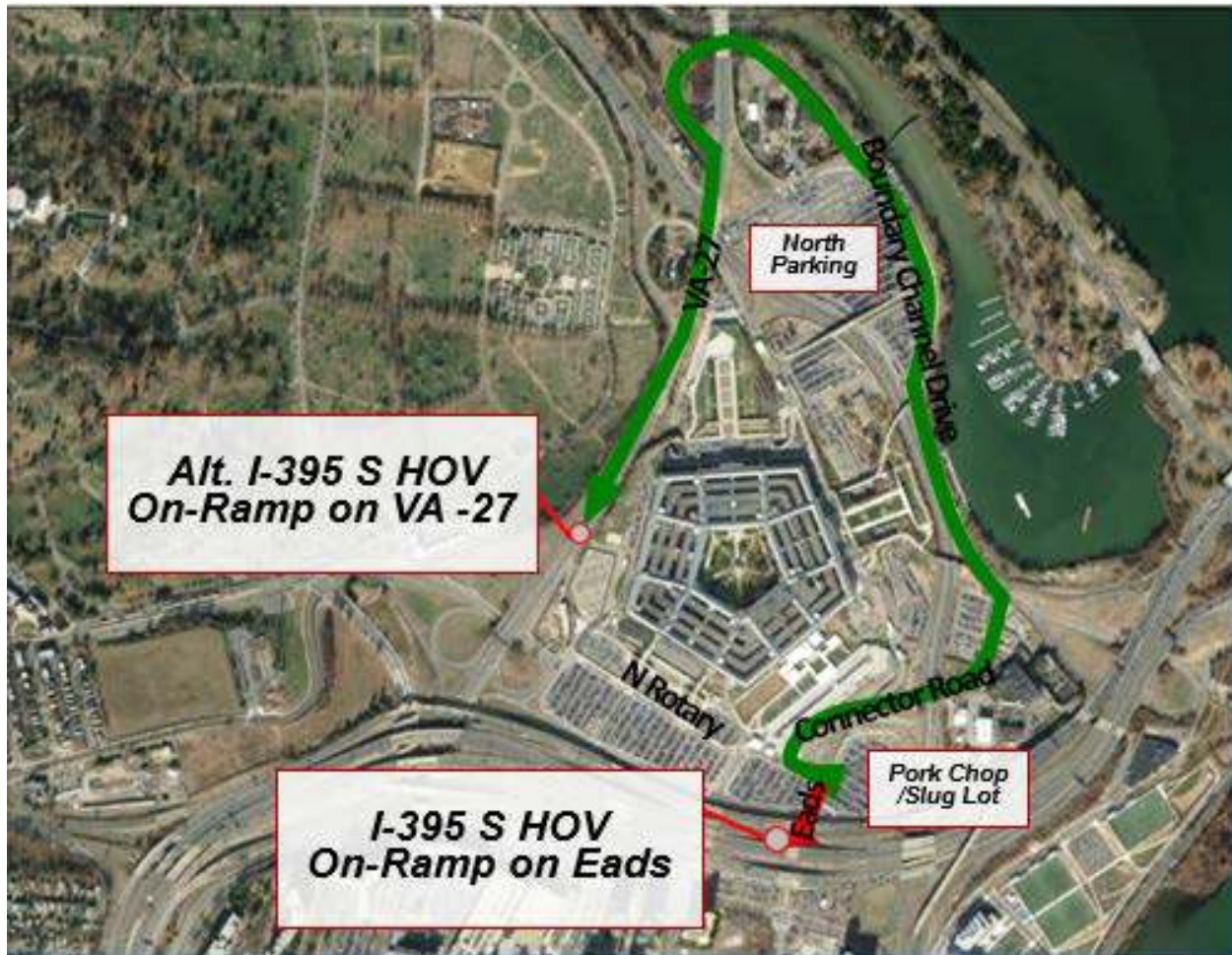


Afternoon Departure from Pentagon South Parking Area toward I-395 South HOV via VA 27

The following map displays the typical exit pattern (**red**) from the Pork Chop/Slug Lot to the I-395 HOV On-Ramp on Eads Street. Delays typically increase during PM rush hour (3 PM – 6PM). Construction along Eads Street and other unplanned events (accidents or special events in DC) will cause additional delays. The path to an alternate I-395 South HOV On-Ramp on VA-27 (**green**) is shown below as another option to leave the Pentagon South Parking area.



Route Option	Description
Typical Route (Red)	Exit from Pork Chop/Slug Lot, turn left onto Eads St, and take ramp to I-395 South HOV.
Alternate Route (Green)	Exit from Pork Chop/Slug Lot. Go straight on North Rotary Road and turn right on Connector Road. Turn left on Boundary Channel Drive. Follow the road towards the bridge to VA-27 South. I-395 South HOV On-Ramp will be on your left.